

What information does the SID collect?

SIDs collect the speed, date and time for every vehicle that passes. This information can then be summarised and the results reported back to the schools and the local community.

How long will the SIDs be outside school?

The SIDs will normally be at each nominated school for one school term, however they may return at a later date.

How can you help?

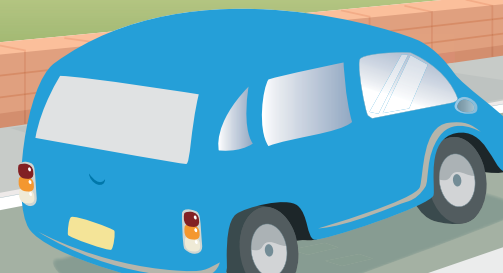
Please observe the 20mph zone to ensure the safety of pupils at both ends of the school day.

You may be asked to complete a survey to measure the effectiveness of the SIDs at your school, if so your co-operation in returning the surveys would be greatly appreciated.

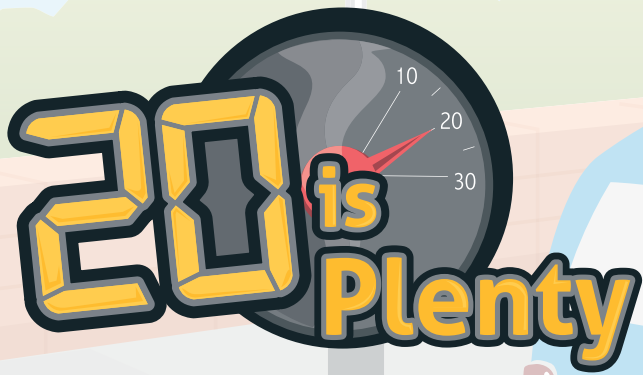
It is hoped that this safety boosting initiative will increase the number of children cycling and walking to school, improving health and well being.

If you have any questions or comments about the school SID programme, please contact:

Deborah Hunter
Road Safety and Sustainable Travel Unit,
Staffordshire County Council.
Tel: 01785 232781
Email: deborah.hunter@staffordshire.gov.uk



**Coming soon
to your school**



Speed Indication Devices (SIDs) In Staffordshire Schools

Your school has been nominated as part of a Staffordshire County Council project to encourage drivers to reduce their speed to a maximum of 20mph outside schools. County Councillors can nominate a school in their ward, where they feel there would be additional benefit from the traffic calming equipment.

What is a SID?

A SID is a portable luminous sign, which displays and records the speed of every vehicle that passes. They are designed to encourage drivers to reduce their speed and help protect road users and pedestrians. SIDs can be used in various speed limits in both urban and rural areas.



What is the school SID programme?

SIDs will normally be placed at both ends of the nominated school site together with warning posters to indicate that drivers should reduce their speed to a maximum of 20mph as they approach the school.

The school SIDs will display speeds at or below 20mph in green and speeds above 20mph will flash and display in red. Very high speeds are not displayed but are still recorded. The data collected can then be used to determine whether further road safety measures are appropriate.

When do the SIDs operate?

School SIDs will operate when pupils are arriving in the morning and leaving in the afternoon, however traffic flows will be unaffected when children are in class and during holidays.

The school SIDs may operate at different times during the day only if it is deemed that there is a significant requirement.



photograph courtesy of 3M